

An aerial photograph of the Oklahoma Tower, a tall skyscraper with a glass facade reflecting the sunset. The tower is surrounded by other city buildings, including a prominent Art Deco style building to the left and a curved modern building in the foreground. The sky is a mix of blue and orange from the setting sun.

# OKLAHOMA TOWER

210 W PARK AVENUE, OKLAHOMA CITY, OK 73102

Photo Credit: CoStar

**BRENT CONWAY**

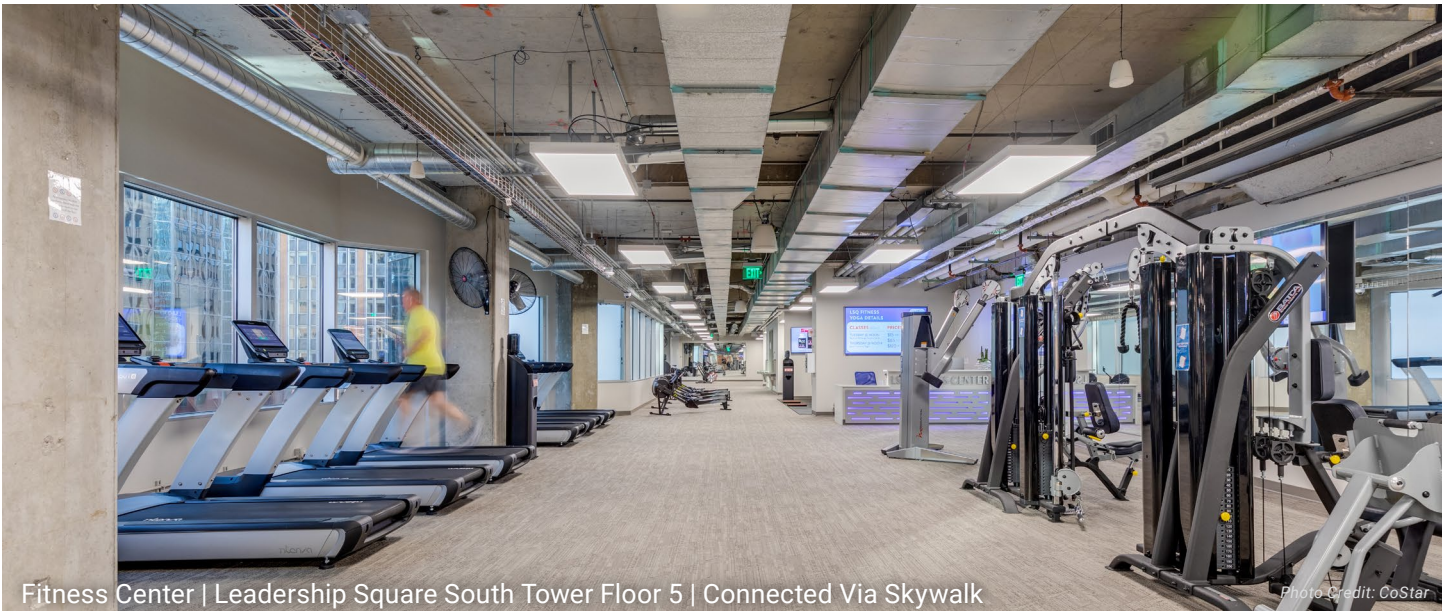
bconway@newmarkrp.com  
O: 405.208.8636 C: 405.850.242

**BILL COHLMIA**

bcohlmia@newmarkrp.com  
O: 405.600.6858 C: 405.620.1978

**NEWMARK**  
ROBINSON PARK





Fitness Center | Leadership Square South Tower Floor 5 | Connected Via Skywalk

Photo Credit: CoStar



Valliance Bank | Floor 2 Lobby



The Manhattan | Lobby

## EXECUTIVE SUMMARY

Oklahoma Tower is centrally located with direct skywalk access to multiple buildings in the Central Business District. Boasting a beautiful atrium with a grand staircase, this office space is one of the premier properties in the area. Retail tenants include: Teena Hicks Company, Park Ave Salon, Valliance Bank, The Manhattan, Richey's Grill and Chicago Title.

## DETAILS

<b>Size</b>	565,414
<b>Rental Rate</b>	\$27.50/SF
<b>Lease Type</b>	FSG
<b>Lease Term</b>	Flexible
<b>Freight Elevator</b>	Fully Accessible
<b>Avg. Ceiling Height</b>	9 Feet

## BUILDING SPECS

<b>Entrances</b>	5 total street-level entrances, 2nd floor lobby accessible via skywalk system	<b>Fiber</b>	Cox direct high-speed fiber
<b>Security</b>	24/7 Security with video surveillance, patrols, and rovers	<b>Energy Savings</b>	Daily tracking of meter readings, tracking of HVAC trends
<b>Elevators</b>	12 passenger, 1 freight, 1 shuttle	<b>Generator</b>	Emergency generator located on roof, diesel fueled for life-safety
<b>Safety Features</b>	24/7 security, engineers on site, fire control room with fire panel, voice annunciator, elevator controls, infinity door access controls, and key boxes. Fire detection with automatic sprinkler system	<b>HVAC</b>	14 heating and cooling zones and 6 cooling only zones per floor. 2-800 ton chillers and 1-250 ton chillers
		<b>Loading Dock</b>	Fully-sprinkled, multi-truck dock with a trailer-high landing and an electric power lift with 4,000 pound capacity



## AMENITIES + NEARBY RETAILERS



**Garage  
Parking**



**Conference  
Center**



**24-Hour  
Security**



**On-Site  
Recycling**



**EV Charging  
Stations**



**Indoor  
Lounge Area**



**On-Site Men's  
Clothier**



**On-Site  
Bank**



**Fitness  
Centers**



**Bike Racks  
+ Shop**



**Massage  
Service**



**On-Site  
Salon**



**OKC  
Streetcar Stop**



**Mother's  
Room**



**On-Site  
Eyecare**



**Bee Healthy**  
*City Place*



**City Bites**  
*Leadership Square*



**Gilded Acorn**  
*First National*



**Ground Floor Cafe**  
*Leadership Square*

**KITCHEN**  
No. 324

**Kitchen 324**  
*Braniff Building*

**nebu**

**Nebu**  
*Devon*



**The Manhattan**  
*Oklahoma Tower*



**Tower Grille**  
*Oklahoma Tower*



**Stella Nova**  
*First National*



**Tellers**  
*First National*



**Cow Calf-Hay**  
*Court Plaza*



**Flint**  
*Colcord Hotel*



**ROBINSON PARK**

**THE PEOPLE OF OKLAHOMA TOWER**

In the Downtown district of Oklahoma City, Robinson Park manages several multi-tenant office buildings, hotels and parking garages centered around the intersection of Robinson and Park. This sizable footprint in the district cultivates an amenity-rich environment for our tenants to mutually benefit from.

When your company joins our network, you and your team will experience the Robinson Park difference!

**2.7M**

Total Office  
Square Feet

**3,841**

Parking  
Spaces

**333**

Hotel  
Rooms

**60+**

Unique  
Amenities



**BRYNN PENDERGRASS**

**Business Manager**

[bpendergrass@robinson-park.com](mailto:bpendergrass@robinson-park.com)



**CHANTEL ARCHER**

**Senior Business Manager**

[carcher@robinson-park.com](mailto:carcher@robinson-park.com)

## THE BENEFITS OF ROBINSON PARK

**Tenant App** | The RP App allows you to interact with our properties like never before. Listed are just some of the amazing features, and we're always adding more to make it your One-Stop-RP-Shop!

**Corporate Discounts** | As a RP Tenant, you gain access to several Corporate Discounts for things like hotels, tickets, technology, and much more!

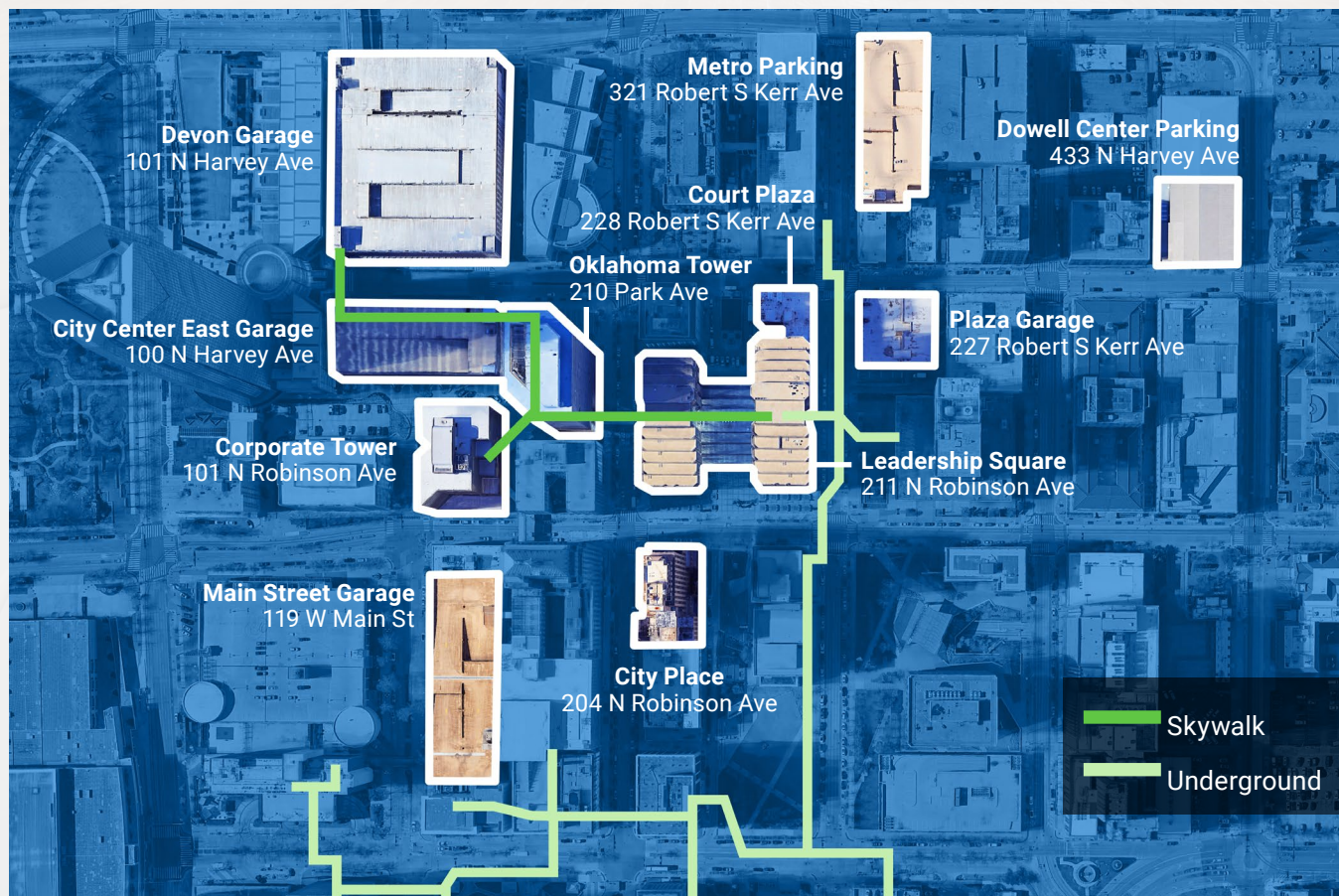


- Direct Communication Link To Management 24/7
- Submit Work Orders and Maintenance Requests
- Schedule Conference Rooms
- Join our Gyms and Manage your Membership
- View and Register for Events
- Receive Notifications Directly from Management
- Security Access to Enter Property
- More features are added regularly!





## PARKING + TRANSPORTATION DOWNTOWN



SCAN OR CLICK HERE  
FOR SUITE AVAILABILITY

