

SITE



416

RENOVATED INDUSTRIAL SPACE | FOR LEASE

416 NE 48TH ST., OKLAHOMA CITY, OK

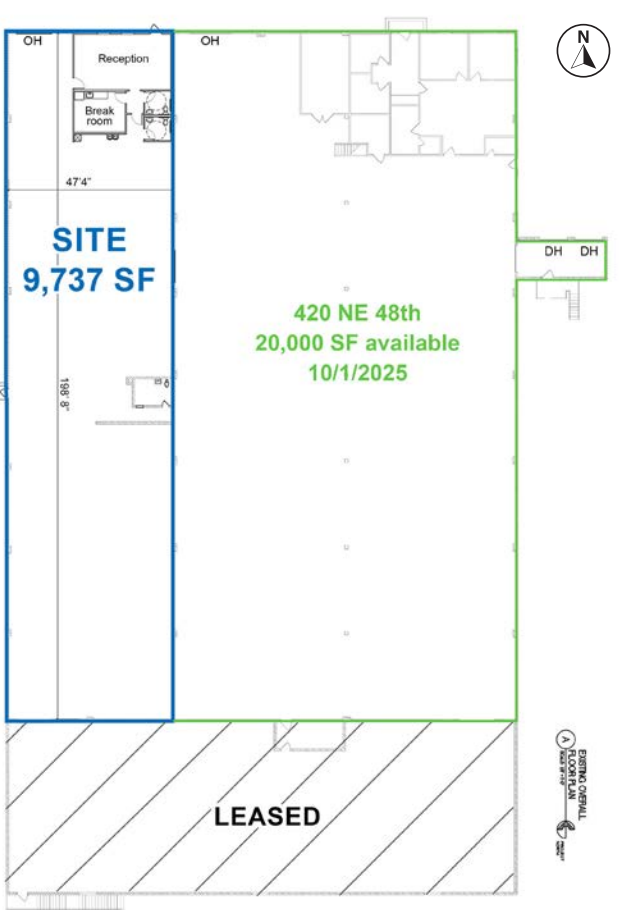
BRETT PRICE, CCIM, SIOR
bprice@newmarkrp.com
C: 405.613.8380

KRIS DAVIS, SIOR
kgdavis@newmarkrp.com
C: 405.202.9525

KARLEY HARPER, CCIM
kharper@newmarkrp.com
C: 405.371.3498

NEWMARK
ROBINSON PARK

416 NE 48TH ST. / FOR LEASE



PROPERTY OVERVIEW

Industrial property located just west of Lincoln Blvd., less than 1 mile from the I-235/I-44 interchange. The Oklahoma State Capitol Complex, Innovation District, and downtown Oklahoma City are all located within 4 miles of the property.

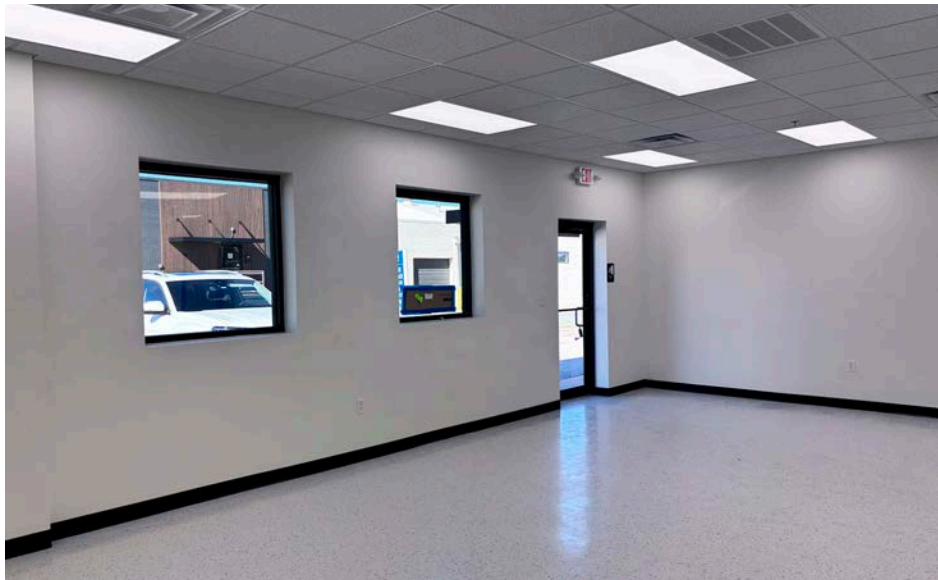
Can be leased with adjoining 20,000 SF or separately.

DETAILS

Available SF	9,737 SF
Lease Rate	\$5.25/SF/YR (NNN)
Building Size	79,692 SF
Submarket	Santa Fe Industrial
Cross Streets	NE 48th & N Lincoln

HIGHLIGHTS

(1) 10' x 12' overhead door
14' clear height
966 SF± new office space
200 amps, 120/240V 3-phase power
New LED lights and paint in warehouse, new ADA restroom, and new office space





SITE



416