



NW 10th St.

Schlumberger

armacell

5 Ac. ±

niagara

43 Acres ±

NTT DATA

W Reno Ave.



WESTGATE LAND | FOR SALE OR BUILD TO SUIT

W RENO AVE. & N SARA RD., OKLAHOMA CITY, OK

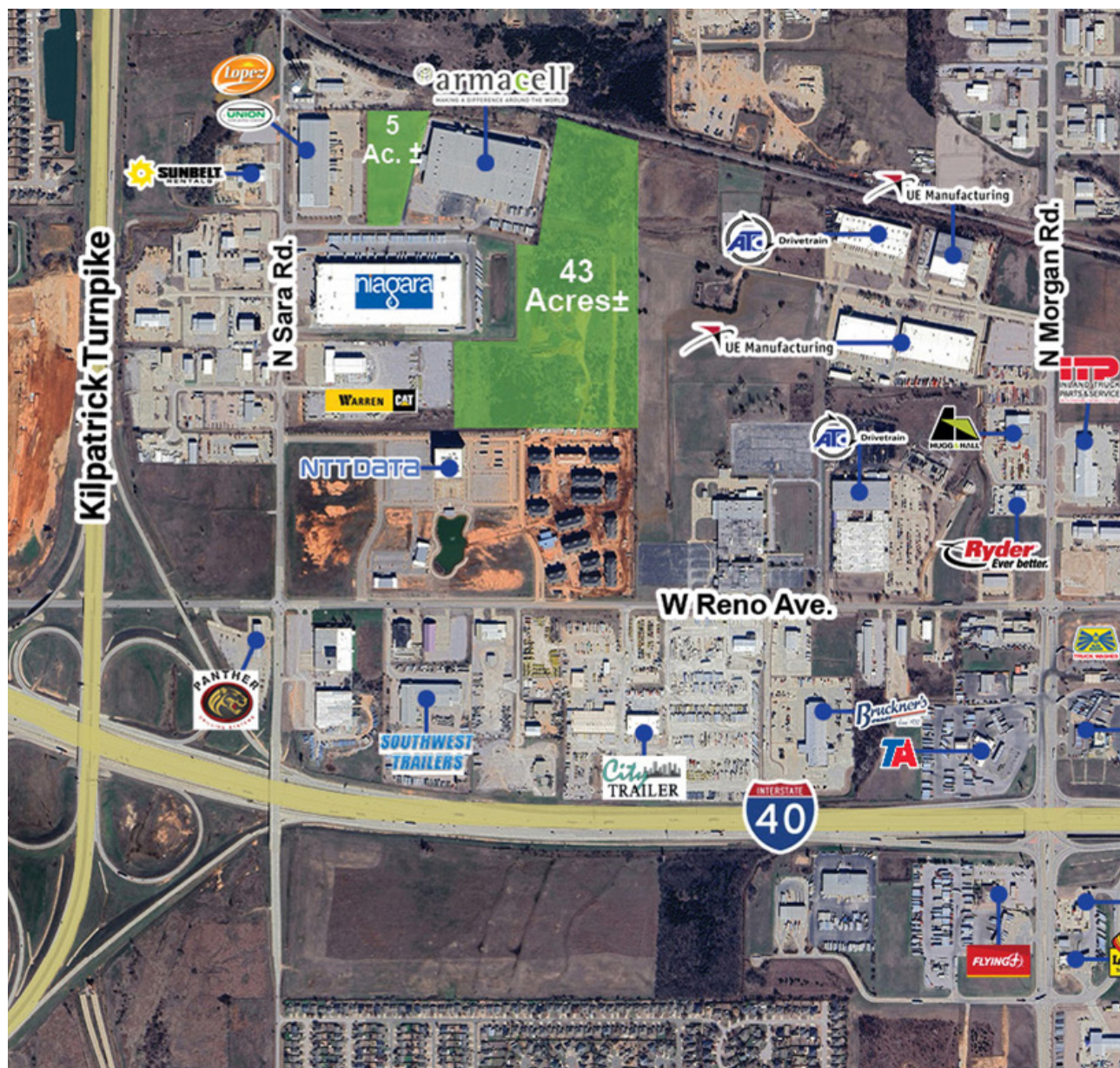
BRETT PRICE, CCIM, SIOR
bprice@newmarkrp.com
C: 405.613.8380

KRIS DAVIS, SIOR
kgdavis@newmarkrp.com
C: 405.202.9525

KARLEY HARPER
kharper@newmarkrp.com
C: 405.371.3498

NEWMARK
ROBINSON PARK

WESTGATE LAND / FOR SALE OR BUILD TO SUIT



PROPERTY OVERVIEW

The available land is located in Westgate Park, a mixed-use development featuring Class A industrial and office space. Future development in the park includes retail and multi-family. The property is located less than one mile from I-40 and Kilpatrick Turnpike, which has been extended to provide direct access to Will Rogers World Airport. Neighboring tenants include Armacell, Niagara, NTT Data, LopeZ Foods, Union Corrugating, and Schlumberger.

DETAILS

Total Land Size	48 Acres±
Price	Build to Suit
Zoning	I-2
Market	Oklahoma City
Cross Streets	W Reno & Sara Rd.

HIGHLIGHTS

- Divisible to 5 Acres±
- Water and sewer to site
- Located off the intersection of I-40 & Kilpatrick Tpk.



204 N. Robinson, Ste 700 OKC, OK, 73102 | for more information, visit us at
110 W. 7th, Ste 2600 Tulsa, OK, 74119 | **NEWMARKRP.COM**

The information contained herein was obtained from sources believed reliable; however, Newmark Robinson Park makes no guarantees, warranties or representations as to the completeness or accuracy thereof. The presentation of this property is submitted subject to errors, omissions, change of price or conditions prior to sale or lease, or withdrawal without notice. Independently Owned and Operated.