

An aerial photograph of the Oklahoma Tower, a tall skyscraper with a glass facade reflecting the sunset. The tower is surrounded by other city buildings, including a historic stone building in the foreground and a modern curved building to the right. The sky is a mix of blue and orange from the setting sun.

OKLAHOMA TOWER

210 W PARK AVENUE, OKLAHOMA CITY, OK 73102

Photo Credit: CoStar

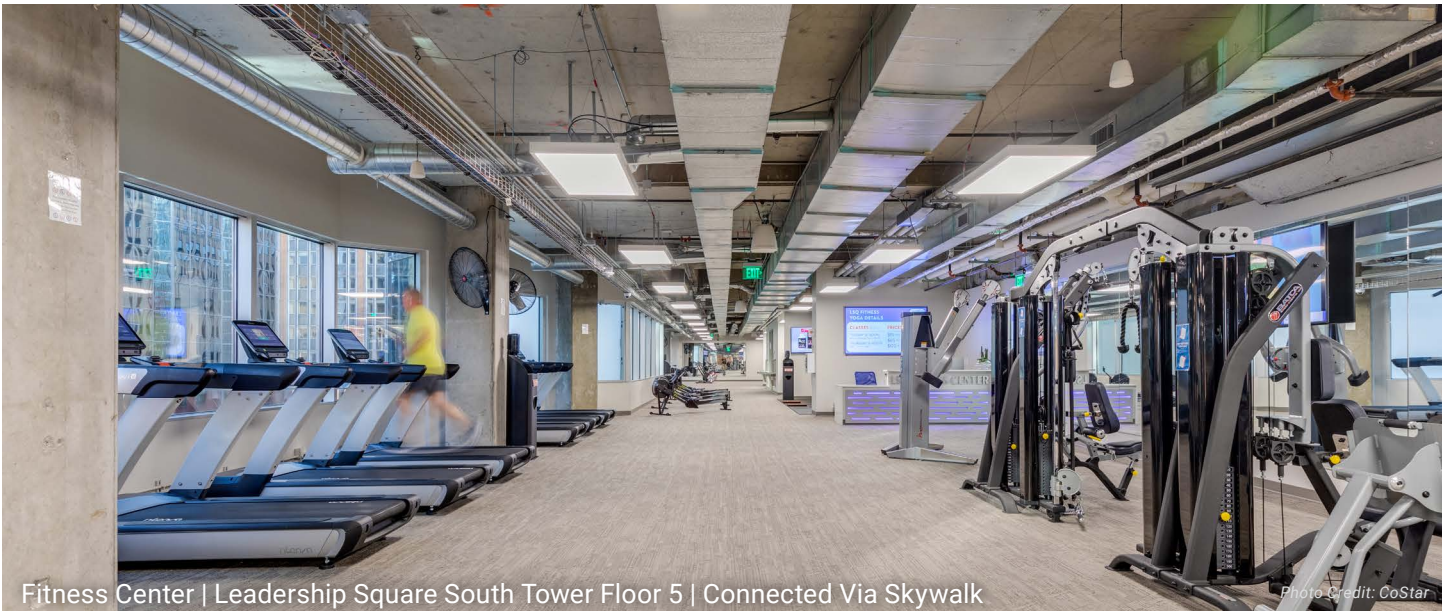
BRENT CONWAY

bconway@newmarkrp.com
O: 405.208.8636 C: 405.850.242

BILL COHLMIA

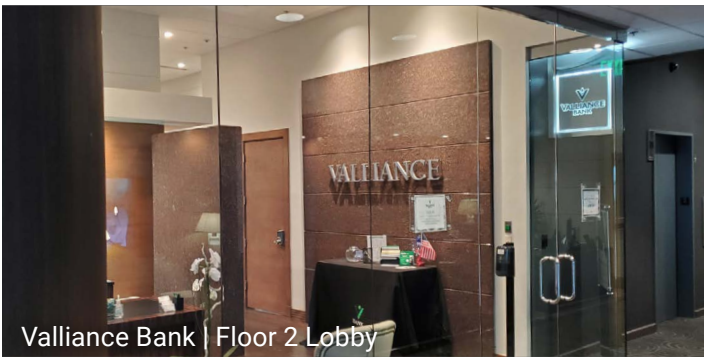
bcohlmia@newmarkrp.com
O: 405.600.6858 C: 405.620.1978

NEWMARK
ROBINSON PARK



Fitness Center | Leadership Square South Tower Floor 5 | Connected Via Skywalk

Photo Credit: CoStar



Valliance Bank | Floor 2 Lobby



The Manhattan | Lobby

EXECUTIVE SUMMARY

Oklahoma Tower is centrally located with direct skywalk access to multiple buildings in the Central Business District. Boasting a beautiful atrium with a grand staircase, this office space is one of the premier properties in the area. Retail tenants include: Teena Hicks Company, Park Ave Salon, Valliance Bank, The Manhattan, Richey's Grill and Chicago Title.

DETAILS

Size	565,414
Rental Rate	\$27.50/SF
Lease Type	FSG
Lease Term	Flexible
Freight Elevator	Fully Accessible
Avg. Ceiling Height	9 Feet

BUILDING SPECS

Entrances	5 total street-level entrances, 2nd floor lobby accessible via skywalk system	Fiber	Cox direct high-speed fiber
Security	24/7 Security with video surveillance, patrols, and rovers	Energy Savings	Daily tracking of meter readings, tracking of HVAC trends
Elevators	12 passenger, 1 freight, 1 shuttle	Generator	Emergency generator located on roof, diesel fueled for life-safety
Safety Features	24/7 security, engineers on site, fire control room with fire panel, voice annunciator, elevator controls, infinity door access controls, and key boxes. Fire detection with automatic sprinkler system	HVAC	14 heating and cooling zones and 6 cooling only zones per floor. 2-800 ton chillers and 1-250 ton chillers
		Loading Dock	Fully-sprinkled, multi-truck dock with a trailer-high landing and an electric power lift with 4,000 pound capacity

AMENITIES + NEARBY RETAILERS



**Garage
Parking**



**Conference
Center**



**24-Hour
Security**



**On-Site
Recycling**



**EV Charging
Stations**



**Indoor
Lounge Area**



**On-Site Men's
Clothier**



**On-Site
Bank**



**Fitness
Centers**



**Bike Racks
+ Shop**



**Massage
Service**



**On-Site
Salon**



**OKC
Streetcar Stop**



**Mother's
Room**



**On-Site
Eyecare**



Bee Healthy
City Place



City Bites
Leadership Square



Gilded Acorn
First National



Ground Floor Cafe
Leadership Square

KITCHEN
N° 324

Kitchen 324
Braniff Building

nebu

Nebu
Devon



The Manhattan
Oklahoma Tower



Tower Grille
Oklahoma Tower



Stella Nova
First National



Tellers
First National



Verde
Court Plaza



Flint
Colcord Hotel



ROBINSON PARK

THE PEOPLE OF OKLAHOMA TOWER

In the Downtown district of Oklahoma City, Robinson Park manages several multi-tenant office buildings, hotels and parking garages centered around the intersection of Robinson and Park. This sizable footprint in the district cultivates an amenity-rich environment for our tenants to mutually benefit from.

When your company joins our network, you and your team will experience the Robinson Park difference!

2.7M

Total Office
Square Feet

3,841

Parking
Spaces

333

Hotel
Rooms

60+

Unique
Amenities



BRYNN PENDERGRASS

Business Manager

bpendergrass@robinson-park.com



CHANTEL ARCHER

Senior Business Manager

carcher@robinson-park.com

THE BENEFITS OF ROBINSON PARK

Tenant App | The RP App allows you to interact with our properties like never before. Listed are just some of the amazing features, and we're always adding more to make it your One-Stop-RP-Shop!

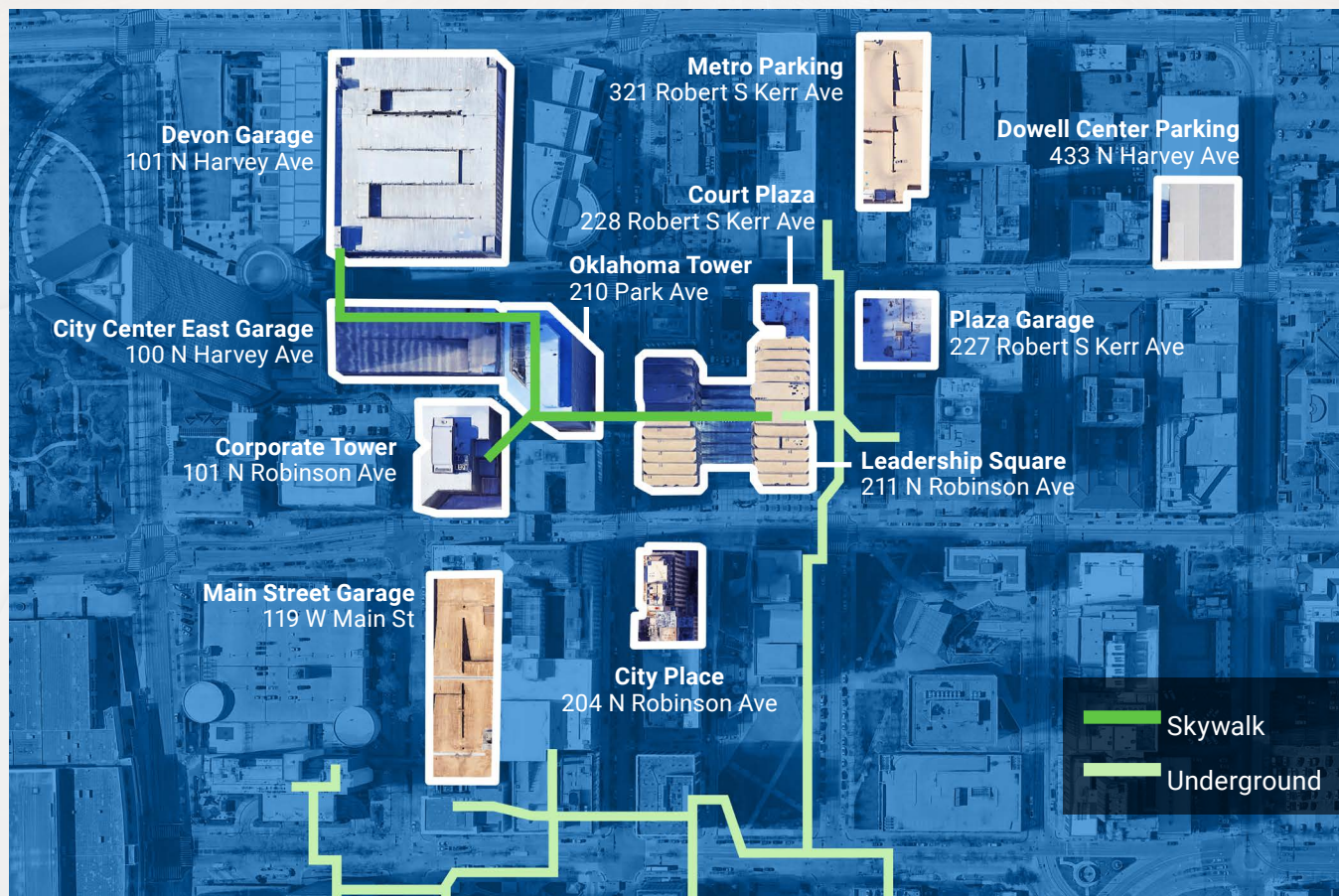
Corporate Discounts | As a RP Tenant, you gain access to several Corporate Discounts for things like hotels, tickets, technology, and much more!



- Direct Communication Link To Management 24/7
- Submit Work Orders and Maintenance Requests
- Schedule Conference Rooms
- Join our Gyms and Manage your Membership
- View and Register for Events
- Receive Notifications Directly from Management
- Security Access to Enter Property
- More features are added regularly!



PARKING + TRANSPORTATION DOWNTOWN



SCAN OR CLICK HERE
FOR SUITE AVAILABILITY

